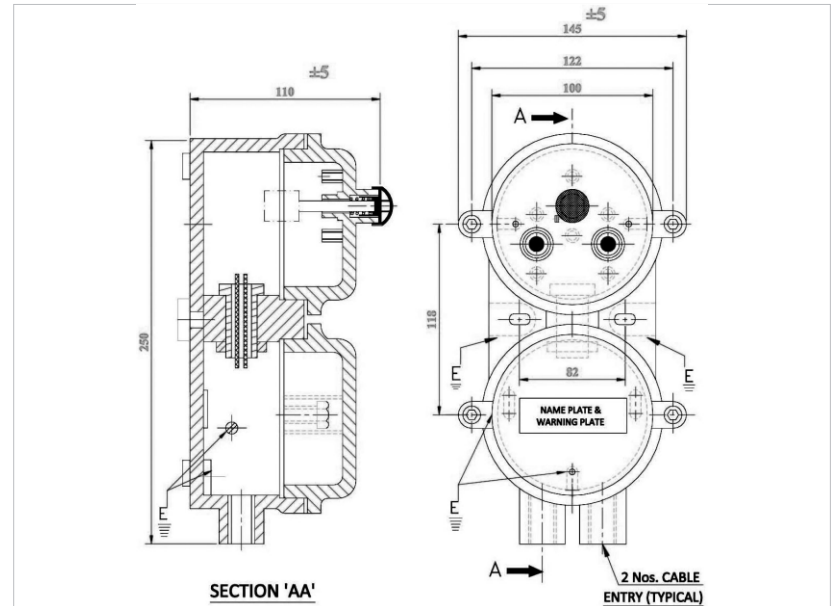


# PATCO FLAME PROOF PRODUCTS

Manufacturer of : Flameproof / Weatherproof, Electrical Equipment, Lighting Fittings, LED Lighting Fittings, Instruments Enclosure & Cable Glands Tested Certified by CIMFR, Dhanbad

## FLP / WP REVERSE-FORWARD PUSH BUTTON STATION



|                         |   |
|-------------------------|---|
| Catalogue No.           | PFP/PBS/09  |
| Type of Ex-Protection   | AS PER IS 2148-2004 / IEC-60079-1:2007              |
| Zone Classification     | Zone 1 & Zone 2                                     |
| Gas Group               | Gas Group I, IIA, IIB                               |
| Ingress IP Protection   | IP-65 IS / IEC60529-2001                            |
| Material of Contraction | High Pressure Die Cast Aluminum Alloy LM6           |
| Paint                   | Epoxy Polyester Powder Coating                      |
| Earthling               | Internal: 01 No. & External: 2 Nos.                 |
| Cable Entry             | 02 Nos. for M20 (3/4" ET)                           |
| Hardware                | Stainless Steel                                     |
| Yellow Push Button      | REVERSE with 1 NO Contact Element 10 AMP            |
| Green Push Button       | FORWARD with 1 NO Contact Element 10 AMP            |
| Red Push Button         | STOP Mushroom Head Pad Lock with 1 NC Contact 10AMP |